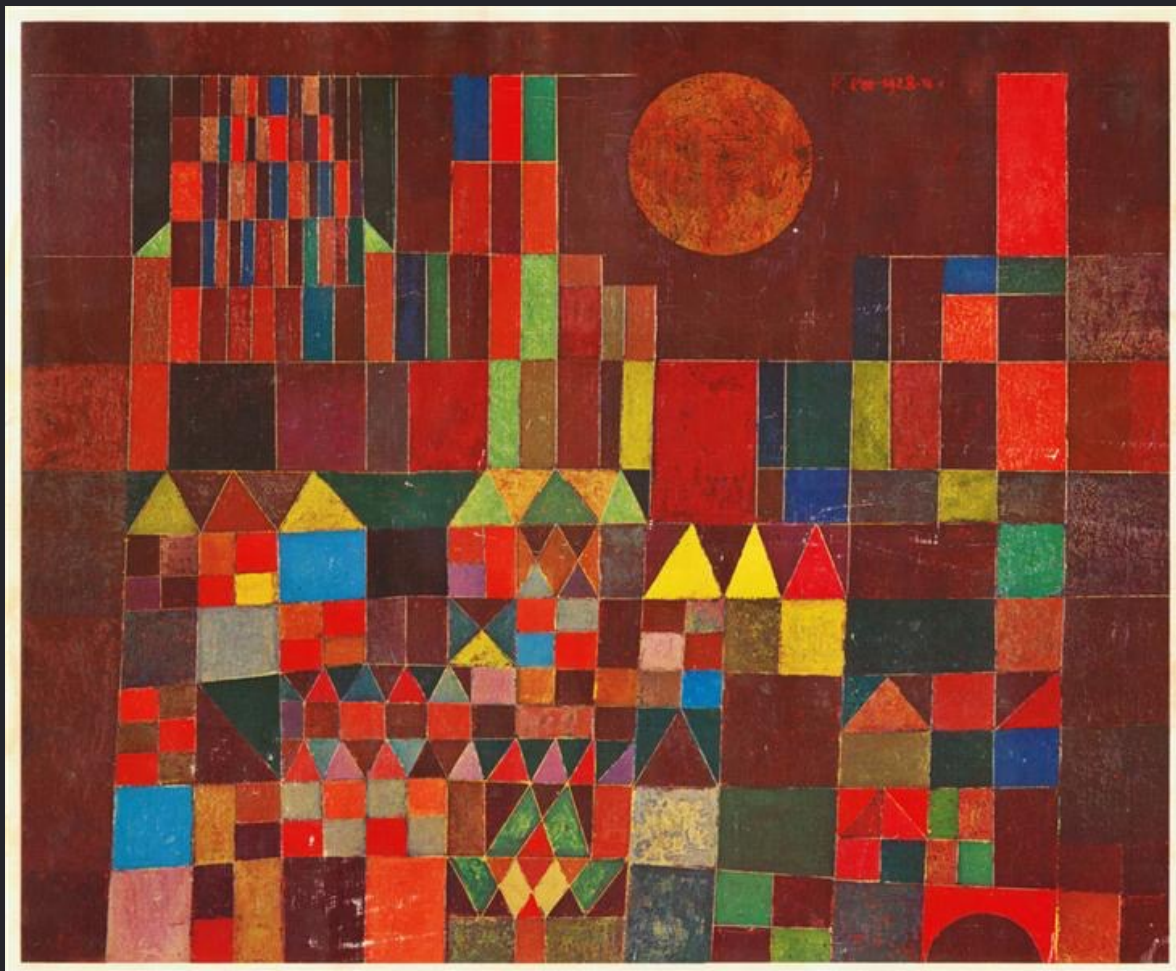


An abstract painting by Paul Klee featuring a vibrant blue background. A large yellow circle is positioned at the top center. Below it, a red horizontal band contains two arched openings. To the left, a tall pink vertical shape with a black triangular top is prominent. The composition is filled with various geometric shapes in colors like red, yellow, black, and white, creating a complex, layered visual structure.

December 1879 – June 1940

**Paul Klee**  
**Swiss-German**  
**Artist**



Castle in the Sun, 1928, oil, Paul Klee



ART WITH **MATI**  
**AND DADA**

**PAUL KLEE**



<https://youtu.be/eqHJ9gDLkL8>

# Paul Klee

## Some Facts About Paul Klee

1. Paul Klee's artistic style was influenced by movements in art that included expressionism, cubism, and surrealism.
2. Paul Klee served in the military during World War I
3. As a young boy he started to follow in his parent's footsteps and train as a musician, but by the time he was a teenager, he became inspired by visual art
4. Klee's artistic breakthrough came in 1914 when he visited Tunisia, Africa and was inspired by the quality of the light there and colors.





**01**

## Step One

In pencil, draw one large circle anywhere on the paper



**02**

## Step 2

Draw two intersecting lines across the circle



**03**

## Step 3

Draw one or more cats anywhere on your paper



**04**

## Step 4

Choose a different color to paint in the different shapes





**“A line is a dot  
that went  
for a walk.”**

**- Paul Klee**



05

## Step 5

Once you have painted the different sections. Go back into some of the intersecting shapes and paint another different layer of color

# Let's Add More Details

**06**

## Small Shapes

Go into different areas and add small brush strokes in different colors

**07**

## The Cats

Using a colored pencils go back into the areas where you have your cats and add details.